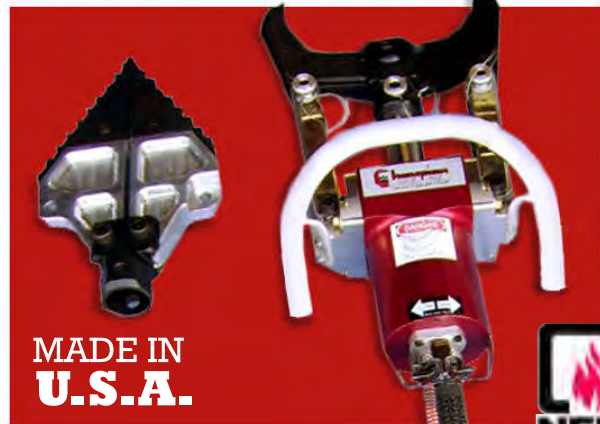


CHAMPION

when every second counts
trust a champion

SC11 The Beast Multi-Tool

Cylinder uses a patented mechanical cross-link and cross-bolt main assembly for major weight savings. Chromoly clevis assembly is twice as light, but three times stronger than traditional yoke assemblies. The hinged blade notch is four inches wide for extra grip and cutting power. Generates 35%+ more cutting force than any other tool in the market. Change from full size cutter to spreader in seconds by pulling three tethered pins.



SC-II
Cutter/
Spreader
Set
Includes
Tool Body
and
Both
Heads



1936
CERTIFICATION
IN PROCESS

LIFETIME! WARRANTY!

All Champion
Tools Come with
Our Exclusive
Lifetime Warranty -
if a Tool Breaks
We Will Repair
or Replace it
Free of Charge!



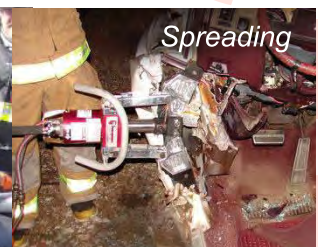
Tested and Proven
to Handle all of the Most
Demanding 2009-2010
Crash Rated Vehicles

MANUFACTURER'S SPECIFICATIONS

- ✓ Max. Force: Cut 372,232 lbs., Spread 79,560 lbs.
- ✓ Type of Cutter: Scissor
- ✓ Maximum Power: In the Heart of the Cut
- ✓ Opening: 11.0" Cutter with 4.0" Power Notch; 28.0" Spreader with 16.0" of Parallel Travel
- ✓ Weight: 42.0 lbs. with fluid and connectors
- ✓ Dimensions: 28.0" x 12.5" x 8.0"
- ✓ Accessories: Includes Both Full Size Cutting and Spreading Heads for One Low Price
- ✓ Laminated, Heat Treated Double Cutting Blades with Safety Tethers
- ✓ Your Choice of Fluid Type
- ✓ Operating Pressure: Your Choice of 5,000 psi or 10,500 psi, Making the Unit Plug and Play Compatible with Any System
- ✓ Lifetime Warranty



Champion SC11
in action



Call or write to ask us for a list of departments that are using Champion so you can hear first hand about how our tools perform in the field. Or better yet, request our free DVD of our tools in action, or to schedule a live demo of the entire Champion line of Cutters, Spreaders, Rams, Power Units and Accessories.



814 Berry Court, Upland, CA 91786 USA

Phone: (909) 982-1126 Fax: (909) 982-0050 Patented with additional patents applied
Toll Free Order Line: 1-888-396-2426 www.championrescuetools.com

© 2007 Champion Rescue Tools © The BEAST is a registered trademark of Champion Rescue Tools